

AHDB
RECOMMENDED

AN ELSOMS' ARABLE
PERFORMANCE GUIDE

Caledon

SPRING OAT

A new standard
in spring oats

 + 

Contents

AHDB
RECOMMENDED

1 GROWING SPRING OATS



CALEDON

2 VARIETY OVERVIEW

3 YIELD

4 DISEASE RESISTANCE

5 AGRONOMICS

6 END-MARKET OPPORTUNITIES

7 ELSOMS

8 OUR ARABLE TEAM





1 GROWING SPRING OATS

AGRONOMICS

Site selection

Spring oats favour slightly acidic soils and pH testing may be appropriate to ensure the crop is receiving optimal nutrition.

Weed control

It should be noted that there are no pre-emergence herbicide options for spring oats in the UK, so creating a stale seedbed ahead of drilling is encouraged to maximise weed control.

Drilling rate

Germination is improved by available soil moisture and good seed-soil contact. Trials have demonstrated that spring oats generally benefit from earlier sowing particularly in the South and East.

Establishing a plant population greater than 275 plants per m² has rarely demonstrated a dramatic yield increase.

Whilst oats are able to compensate for a lower plant population, establishing a thin canopy may lead to slower ripening as the stems and leaves remain green for longer.

Fertiliser

Prioritise early applications of fertiliser to avoid issues with green stems at harvest.

Consider the risk of fertiliser leaching, particularly on earlier drilled crops or crops planted on lighter soils. Appropriate action should be taken to reduce this risk.

PGRs

Oats have a softer leaf than other cereals, making them sensitive to PGRs particularly in drier conditions.

Reasons to grow spring oats

Spring oats offer UK farmers in 2026 a flexible, low-input crop that improves soil health, supports rotations, reduces weed pressure, and meets growing demand for milling and feed markets.

Take-all break

Oats are not impacted by take-all

End market premiums

Premiums available through milling contracts

Spring cropping

Stale seed beds keep weeds under control



Spring oats ideal drilling window

SOUTH

Mid February to mid March

NORTH

Mid February to late March/early April

1 GROWING SPRING OATS



DISEASE RESISTANCE

Powdery mildew

Varietal resistance to mildew is particularly attractive as other control options may require a stand-alone product and spray.

Appearing as white fluffy pustules, powdery mildew turns to an off white/beige colour as it ages. The green bridge can facilitate the transmission of powdery mildew into crops of spring oats. For this reason it is important to control volunteers and grass weeds.

It requires high humidity (>80%) but spores will germinate between 5-30°C meaning the threat is present through the season.

Crown rust

Appearing as orange/brown pustules scattered over the leaf surface. Crown rust prefers warm, humid weather with temperatures of 20-25°C optimum for disease development.

Responsible for high yield penalties in oats, it can be difficult to control as spores can lay dormant or survive on other host species, infecting the crop in the spring.

Seed treatments

A range of seed treatment options are available for spring oats.

As oats can be more susceptible to manganese deficiencies than other cereals, a manganese or combination seed treatment will help to give your crop its best start.



2 CALEDON VARIETY OVERVIEW

A new standard in spring oats

Caledon is the most productive spring oat in England and Wales, topping the AHDB Spring Oat Recommended List 2026/27 by a considerable margin.

It combines high yield, attractive agronomics and marketability, making it the obvious choice for spring oat growers.



“In 2025’s dry conditions Caledon performed strongly, delivering some of the best yields in both Suffolk and Hampshire.”

BRIN HUGHES
Agronomist
Richardsons Milling

Pedigree

DelfinXKomfort

Developed with Saaten Union, Caledon is a result of our strong partnership with breeders across the world.

Key Features

High-yielding

The highest yielding spring oat on the AHDB Recommended List.

Rated for resistance

The highest rated variety for disease resistance on the AHDB Recommended List.

Strong milling appeal

Excellent grain quality with high kernel content, good specific weight and low screenings.



3 CALEDON YIELD

High performer, season after season

Caledon has consistently been the top performing husked oat across 5 years in trial.

High output across input levels

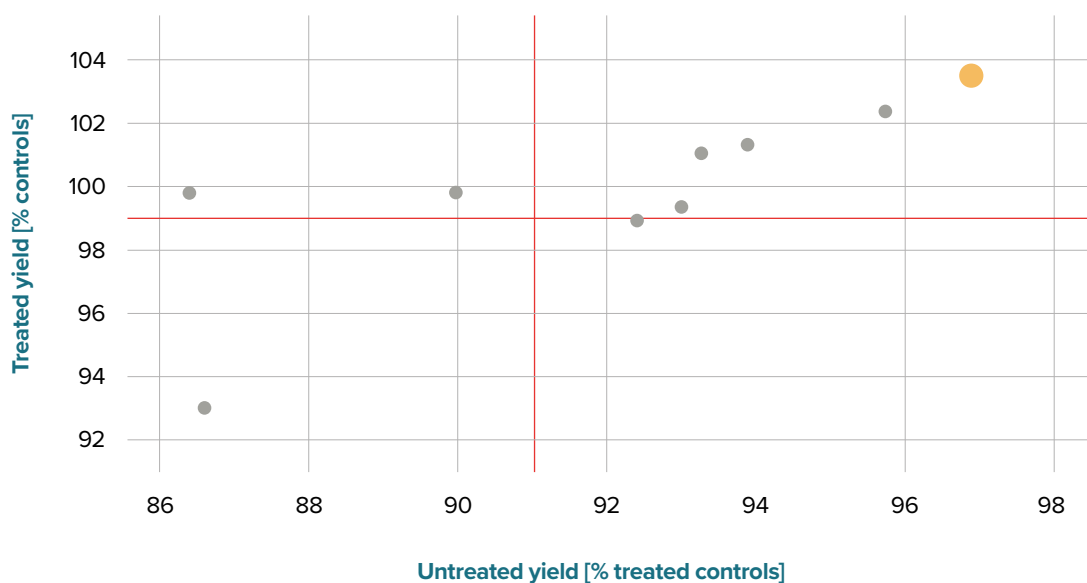
Caledon has demonstrated an attractive combination of high treated and high untreated yield. No matter what the season demands, Caledon can be relied upon to deliver.

Caledon 5 year yield performance

	2021	2022	2023	2024	2025
YIELD	103% controls	108% controls	103% controls	101% controls	105% controls
TRIAL POSITION	1st	1st	1st	1st	1st

Caledon treated/untreated yield comparison

● CALEDON ● OTHER VARIETIES



Red lines represent average values for treated yield and untreated yield.

4 CALEDON DISEASE RESISTANCE

Leading the way

Caledon is ranked highest on the AHDB Recommended List for resistance to powdery mildew and crown rust.

Caledon disease resistance comparator

	MILDEW 1-9		CROWN RUST 1-9
CALEDON	8.2	CALEDON	5.5
CONTROLS*	7.3	CONTROLS*	4.7

* Average across all spring oats on the 2026 Recommended List.

Fungicide options

Caledon combines high yield potential with straightforward agronomy. Powdery mildew and crown rust can be effectively managed with a two-spray fungicide programme.

Spring oats fungicide timing

	T1 GS30-31 Stem extension	T2 GS 39-55 Flag leaf fully emerged; middle of panicle emergence
Aim	Protect the plant from early crown rust infection.	Top up on crown rust protection.
Considerations	Economic threshold for treating mildew. May require application of specific mildewcide.	SDHI fungicides may give additional greening benefit, even in absence of disease. Careful timing required to avoid delaying crop senescence.

5 CALEDON AGRONOMICS

Drilling

Spring oats favour slightly acidic soils and germination is improved by soil moisture. The target rate for Caledon should be to establish 250-275 plants per m² depending on location, drill date and conditions at planting.

As with all crops, prioritising even establishment will reduce problems with canopy management and uneven maturity at harvest.

Growth habit

Caledon has an erect growth habit and although it has a more moderate tillering capacity, it has shown a fast speed of development. Earlier sowing can increase the risk of field losses, whilst later sowing may reduce tiller number. Balance these factors when considering the optimal sowing rate for Caledon.

Fertiliser

Recent trials for early sown crops (those sown before early March) have shown that an application of 70% of the total dose of nitrogen at drilling and a further 30% at GS 30/31 has delivered improved yields when compared to a single application. In trials, this approach has yielded the best results for Caledon.

PGR

Caledon is a stiff strawed variety with good resistance to lodging. Many factors can impact lodging risk, including weather conditions, field location and drill date. We always recommend a programmed approach to PGRs, with a split dose across two applications.

Early applications benefit a crop by helping with tiller retention and shortening the lower internodes. Later applications reduce the length of the upper internodes and lower the risk of brackling.



See Section 1 ‘Growing Spring Oats’, for ideal drill timing and further agronomy advice.

Caledon growth characteristics

Growth habit	Erect
Tillering	Moderate
Panicle cover	Medium
Speed of development	Fast
Kernel colour	Yellow

SOURCE: Elsoms trials.

Caledon straw characteristics

Resistance to lodging -PGR 1-9	[7]
Straw length -PGR CM	114

6 CALEDON END-MARKET OPPORTUNITIES

Grain quality

Caledon has excellent grain quality, with high kernel content, good specific weight and low screenings. Nordsaat trials have demonstrated the exceptional quality of Caledon when compared to other varieties, making it a good choice for millers.



Suitable for milling

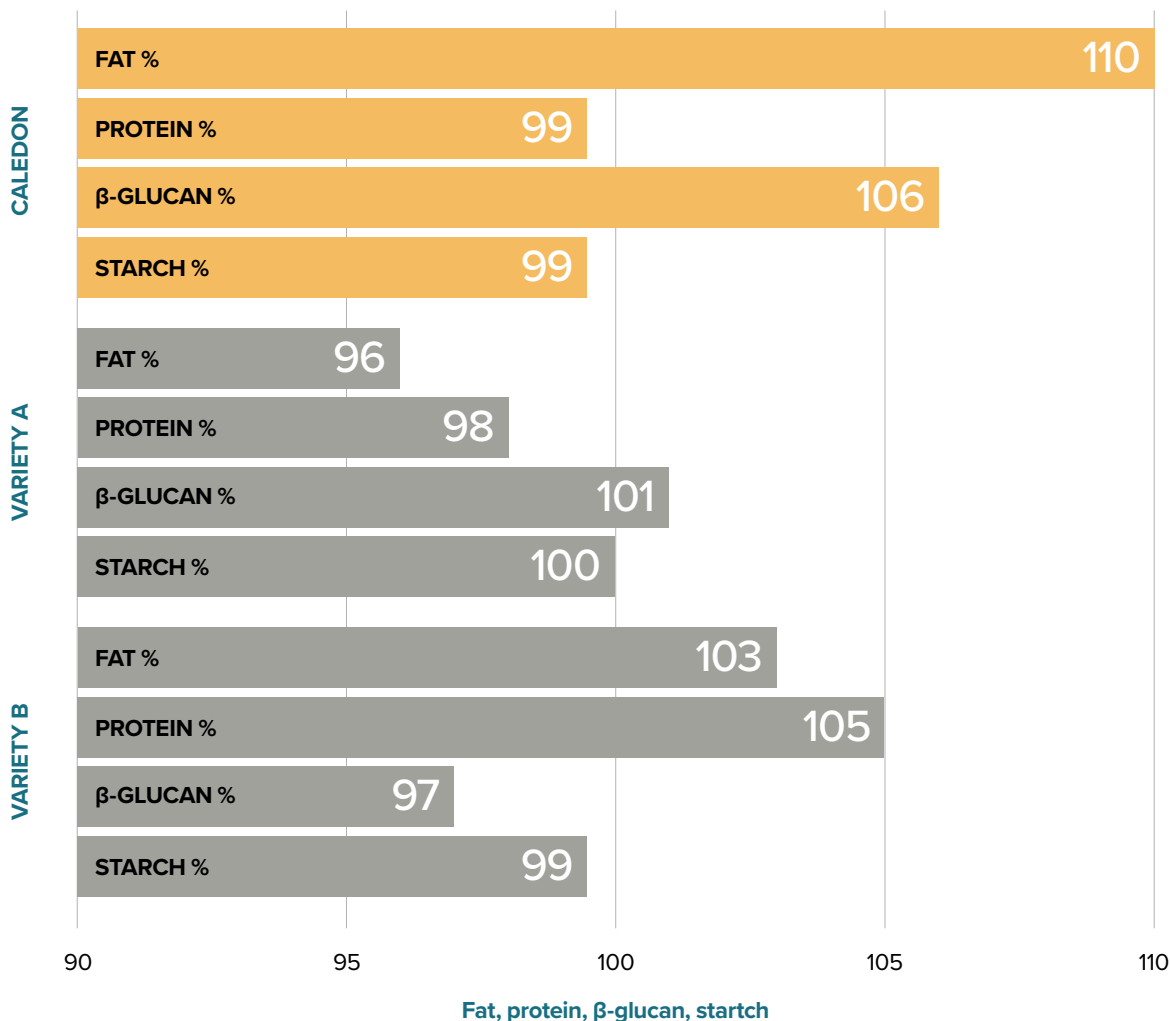
Caledon grain quality measure	CONTRACT SPECIFICATION*	CALEDON
Kernel content %	71 min	72.4
Specific weight kg/hl	50-51 min	51.4
Screenings % through 2.0mm	6-7 max	2.1



Competitive feed option

* Subject to change

Caledon grain content comparator



SOURCE: Nordsaat trial data.

7 ELSOMS

Unlocking the power of plants

Elsoms agricultural division provides UK farmers with a comprehensive range of high-performing arable crops, developed through our own and our partners' breeding programmes.

Our portfolio spans competitive varieties of cereals, oilseeds, and pulses, giving farmers the choice and resilience they need to adapt to changing markets, regulations, and environmental pressures.

By combining advanced plant science with generations of expertise, we deliver solutions that not only help farms grow efficiently but help everyone grow more from less.

Innovation with purpose

Innovation is at the heart of everything we do, and it always comes with the same intent; positive advancements that help unlock the power of plants.

Our approach blends cutting-edge science with practical application ensuring that new ideas work in the real world for the people who grow and depend on our seeds.

Leading seed technology

With over 30 years of specialist experience, we're the UK's leading seed treatment experts.

Our core focus is maximising quality and consistency, and our enhancements give crops the best start, ensuring even germination, stronger early growth, and higher marketable yields.



Powered by partnerships

We work as partners, with researchers, breeders, growers, suppliers and distributors.

Our purpose is not just supplying seeds or services, it's also building collaborative relationships that solve real challenges and deliver better outcomes for everyone we work with.

Our strong partnerships give us access to a wide variety of breeding material from across the world allowing us to continually improve and develop higher-performing and more sustainable varieties.

8 OUR ARABLE TEAM

Driven by passion

Our dedicated team of breeders, scientists, agronomists and crop teams bring a genuine enthusiasm for what they do to every part of our business.

Their depth of sector knowledge is extraordinary, and they're constantly looking for ways to evolve, finding new and better ways for our customers to grow more from less.

Speak to our experts

If you have any questions about Caledon spring oats or if you want to discuss our wider portfolio, contact our arable team today.



Toby Reich

Head of Agriculture

Mobile +44 (0) 7376 030918

Direct +44 (0) 1775 715615

toby.reich@elsoms.com



Freddie Durrant

Sales Manager: Agriculture

Mobile +44 (0) 7779 776423

Direct +44 (0) 1775 715629

freddie.durrant@elsoms.com



Kurtis Scarboro

Crop Manager: Cereals and Oilseeds

Mobile +44 (0) 7903 216731

Direct +44 (0) 1775 715029

kurtis.scarboro@elsoms.com



Ben Urquhart

Technical Manager: Agriculture

Mobile +44 (0) 7507 521258

Direct +44 (0) 1775 666607

ben.urquhart@elsoms.com



Olivia Cox

Commercial Assistant: Agriculture

Mobile +44 (0) 7947 934101

Direct +44 (0) 1775 660640

olivia.cox@elsoms.com

Agronomy Best Practice

Use plant protection products safely.

Always read the label and product information before use.

Consult a BASIS Qualified Advisor for advice and guidance on crop protection products.

Consult a FACTS Qualified Adviser for advice and guidance on nitrogen applications.

DATA SOURCE

All information and data is sourced from AHDB Recommended List Spring Oat 2026/27 unless stated otherwise.