

VARIETY TECHNICAL SHEET



TOP BAMFORD '24.

Introducing Bamford,
the highest yielding
candidate soft wheat on
the Recommended List.

THE TOP CHOICE BAMFORD THIS SEASON

Bamford is one of the most competitive wheats coming to the market in 2023/24. With the highest untreated yield of the 23/24 RL Candidates at 92%; Bamford consistently delivers high yields across the UK year to year, making it the benchmark in yield resilience.

This exceptional variety tops the list as a high-quality Group 3 that has produced quality soft flour. Suitable for both domestic milling and export, Bamford has some of the widest market options available. With no major agronomic weaknesses, it's stiff strawed with good lodging resistance which will give you the confidence to push the variety to maximise yield.

Bamford gives you versatility in end-market use, cost-effective farming solutions, and unmatched performance. Diversify your market opportunities, reduce input costs, and maximise your income.



WHY CHOOSE BAMFORD?

UNMATCHED YIELD POTENTIAL

- Top for yield - it's one of the most competitive wheats coming to the market, yielding 106% on the 23/24 RL Candidates List.
- Consistency - Bamford has shown true yield resilience with consecutive top yield results across two inconsistent years.

UNLOCK MULTIPLE MARKET OPPORTUNITIES

- Market options - Bamford tops the list as a Group 3 variety suitable for domestic biscuit milling, export (uks) and distilling.
- Excellent grain quality - Bamford has produced quality soft flour with high spec weight, good Hagberg and chopin data which offers both high water absorption, good dough rheology and high extraction rates.
- Positive for distilling - Bamford offers a substantial alcohol yield increase over controls.

OPTIMISED FOR LOWER INPUTS

- N efficiency - Bamford has shown itself to be very nitrogen use efficient, maintaining high yields without protein dilution.
- Fungicides - Bamford has good resistance to Yellow Rust and Septoria tritici. Monitor crops and treat as appropriate.
- Soil Borne Virus resistance - Bamford benefits from having a resistance gene to Soil Borne Wheat Mosaic Virus.

EFFICIENT AGRONOMIC PERFORMANCE

- Soil type - Bamford is suitable on both light and heavy soils; born in the Fens, Bamford is not shy to high fertility soils.
- Robust standing - Bamford has stiff straw showing 0% lodging in 2022 trials. Like most varieties, Bamford will benefit from a split well timed PGR programme.
- Rotation position - Bamford suits a first and second cereal position, good resistance to take all and has the Pch1 gene for eyespot resistance.

TECHNICAL DATA

PEDIGREE: Moulton x EW129

NATIONAL LISTING: AHDB Recommended List Candidate 23/24

YIELD PERFORMANCE*

Treated Yield %				Untreated Yield%
UK	East	West	North	UK
106	106	[107]	[[103]]	92

- An outstanding variety, with a **UK treated yield of 106% and the highest untreated yield of the 23/24 RL Candidates at 92%**.
- One of the **most competitive wheats coming to the market**.
- Consistently delivers high yields across the UK year to year, making it the **benchmark in yield resilience**.
- Delivers consistency between years, testament to the variety's **yield reliability** across two different seasons.
- Performs well **across all soil types**, offering the adaptability we have come to expect from Elsoms wheat varieties.
- Bamford has been trialled for its **nitrogen use efficiency**.
- One of the most **competitive varieties for yield, when reducing inputs** (compared to controls).

DISEASE RESISTANCE*

Mildew	Yellow Rust	Brown Rust	Septoria tritici	Pch1
7	8	6	7	Y

- Strong **early-season disease resistance**, which is key to maintaining green leaf area for maximum yield potential.
- Good **resistance to all major diseases in all regions** especially earlier diseases such as Yellow Rust and Septoria tritici.
- Benefits from the PCH1 rendezvous gene for **resistance to eyespot**.
- It's robust disease package makes it **suitable for all regions of the UK**, with the benefit of being the variety with the highest untreated yield out of the 23/24 RL Candidates List.
- Bamford is an earlier variety, **maintaining green leaf area** to maximise grain fill is important.

AGRONOMIC PERFORMANCE

Lodging w/o PGR	Lodging w PGR	Straw Length	Maturity
0%	0%	91cm	+1

- **No major agronomic weaknesses**; stiff strawed with good lodging resistance. A well targeted split PGR programme will be suitable.
- Relatively **early maturity** with some trials indicated slightly earlier than the RL data at a +1 indicates. Choosing an early variety helps to ensure a timely harvest and flexible rotational position.
- A **moderate tillering variety**, creating a large ear with moderate biomass.
- Recommended at your **usual on-farm sowing rate**, only reducing on particularly heavy or fertile soils.
- Bamford **can handle a variation of seed rates**. Its wide sowing window allows you to drill when conditions are most favourable.
- Demonstrates **fast spring development with moderate autumn growth**, making it suitable for a wide drilling window; ideal is the end of September to end of November, however this can be stretched either side dependant on the season.
- Bamford has shown **good competitiveness to grass weeds**, with its slightly more erect than prostrate growth habit.

QUALITY

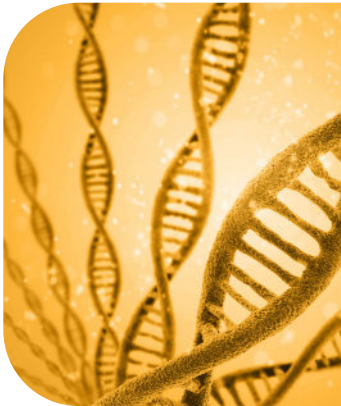
Spec Weight (kg/hl)	Protein	HFN	Water Absorption	Alcohol Yield (LA/tonne)
78.6*	10.9%*	288*	High	Very High

- Bold grain with a **spec weight of 78.6 kg/hl** has produced quality soft flour that offers both **high water absorption, good dough rheology and high extraction rates**.
- Some of the **widest market options available** as it is suitable for both domestic milling and export.
- Positive for distilling which will find favour with farmers growing for the distilling market, as it offers a **substantial alcohol yield increase over controls**.

* AHDB Winter Wheat Trials Harvest 2023 Candidate Varieties

VARIETIES THAT EXCEED EXPECTATIONS

We're committed to continued investment in cutting-edge research and development to bring you top-tier winter wheat varieties, like Bamford.



Advanced genomics platform.

Our state-of-the-art genomics platform enables us to accelerate the breeding process, allowing for precise selection of desirable traits. This technology empowers us to develop varieties that deliver superior performance.



Expert staff and technology.

Our dedicated team of breeders, scientists, and agronomists work tirelessly to develop and refine our varieties. We harness the power of artificial intelligence (AI) and drone technology to enhance our breeding programs and ensure the highest quality standards.



Strength in partnership.

Elsoms' long-term partnerships ensure we rigorously evaluate and validate our wheats' performance through extensive testing in various scenarios and conditions. Elsoms has access to a huge resource of data and knowledge. Our partnerships also give us access to a wide variety of breeding material from across the world allowing us to keep developing new varieties year on year, bringing beneficial new traits to market.

Speak to the specialists

For any questions about Bamford Winter Wheat or to discuss the portfolio, contact the team today:

GEORGE GOODWIN

Agriculture Technical Manager

e george.goodwin@elsoms.com

t 01775 715005

m 07866 793689




Elsoms Seeds Ltd., Pinchbeck Road,
Spalding, Lincolnshire PE11 1QG

t 01775 715000

e seed@elsoms.com

elsoms.com

 Follow us - search 'Elsoms Seeds'


Elsoms
The Seed Specialists