

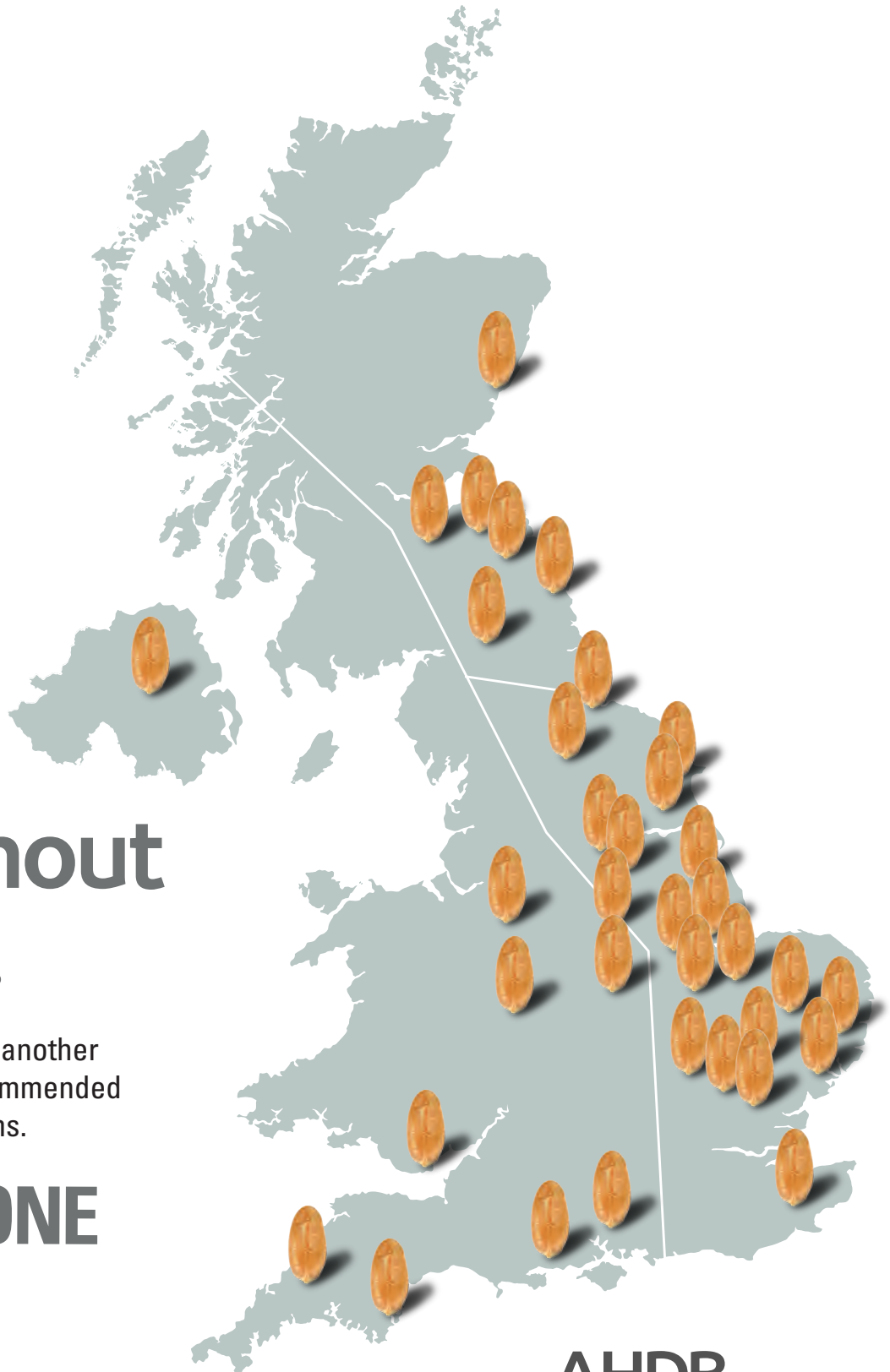
# VARIETY TECHNICAL SHEET

**Elsoms**  
The Seed Specialists

Excels  
in the  
north,  
thrives  
throughout  
the UK.

Introducing Blackstone, another  
outstanding AHDB Recommended  
winter wheat from Elsoms.

**BLACKSTONE**  
Winter Wheat



**AHDB**  
RECOMMENDED

# BLACKSTONE

Winter Wheat

## A DEPENDABLE AND HIGHLY VERSATILE VARIETY IN EVERY CORNER OF THE UK

Blackstone not only excels in the challenging conditions of the North but also thrives across the entire UK. With its robust disease resistance, impeccable agronomic features, and being one of the top yielding group 4 soft varieties on the RL, Blackstone stands stiff and tall as the epitome of reliability. From the Midlands upwards, Blackstone dominates with its stiff straw and resistance against yellow rust, septoria tritici, and OWBM, ensuring a safe and secure harvest even in the most demanding environments. But Blackstone isn't just limited to the north; its adaptability extends nationwide, providing growers with the confidence they need to tackle uncertainties in their fields.

Blackstone also offers a sowing window like no other. Its wide window allows for flexible planting schedules, accommodating varying farming practices and weather conditions. Whether it's early drilling or late sowing, Blackstone remains steadfast, delivering consistent performance and optimal yields, boasting one of the highest yielding potentials among Group 4 soft wheats. So, if you're looking for a feed or distilling wheat that combines versatility, resilience, and exceptional performance, choose Blackstone.



## WHY CHOOSE BLACKSTONE?

### EXCELLENT YIELDS

- Treated yield percentages across different regions, notably 103% in the north.
- Untreated yield of 87%, offering reliability across the country, even with the uncertainty of input application windows.

### A WIDE WINDOW TO SUCCESS

- Ability to drill from early September, through to early spring gives Blackstone one of the widest sowing windows on the market.
- Wide sowing window ensures flexibility in planting schedules, supported by strong late sown performance at 105%.
- Versatile variety suitable for both first and second cereal positions, adapting to diverse cropping strategies.
- Excellent resistance to fusarium, mildew and brown rust ensures crop health and minimises risks during critical growth stages.

### DISEASE RESISTANCE

- Stellar scores against common wheat diseases: yellow rust, mildew, and fusarium.
- One of the best, most well-rounded disease packages among all group 4 softs on the RL.

### QUALITY GRAIN

- High spec weight and protein content ensure superior grain quality.

### DUAL BENEFITS

- Higher straw volume enhances soil health and potential income through baled straw removal.
- Contributes to long-term sustainability and profitability for growers.

# TECHNICAL DATA

**PEDIGREE:** Panacea x KWS Tempo

**NATIONAL LISTING:** AHDB Recommended List 2024/25

## YIELD PERFORMANCE

Treated Yield %				Untreated Yield%
UK	East	West	North	UK
103	103	101	[103]	87

- A **high yielding** Group 4 Soft variety meeting the tough demands set by **UK and northern growers**.
- Remarkable **consistency** over multiple years and across various soil types.
- **Wide sowing window** supported by strong late sown performance at 105%.
- Suitable for both first and second cereal positions, Blackstone is **versatile** and adapts to diverse cropping strategies.
- Strong untreated yield, supported by excellent disease resistance scores, provides growers with the opportunity to **reduce input costs**.

## DISEASE RESISTANCE

Mildew	Yellow Rust	Brown Rust	Septoria tritici	OWBM
[7]	9	6	6.2	R

- Blackstone showcases robust **resistance against yellow rust**, a common issue across the UK.
- Blackstone boasts good **resistance against mildew**, making it well-equipped to handle later season disease pressures such as brown rust, performing comparably to most Recommended List (RL) varieties.
- During the challenging 2022/23 season, Blackstone demonstrated consistent, strong **resistance against septoria tritici**.
- Excellent **resistance to late-season diseases** like mildew and brown rust.
- With an [8] fusarium ear blight score, **Blackstone excels when sown later**, especially after maize.

## AGRONOMIC PERFORMANCE

Lodging w/o PGR	Lodging w PGR	Straw Length w/o PGR	Maturity
8	7	92cm	+2

- With its **flexible drilling capabilities**, Blackstone combines the slower autumn development akin to Claire with the robust spring tiller vigour reminiscent of Robigus, offering adaptability to diverse planting schedules.
- Chopped straw coverage from Blackstone aids in **moisture retention** for subsequent crop seed beds, providing an added benefit to soil moisture management.
- Blackstone **responds well to inputs**, and with proper PGR application, growers can optimise stem stiffness, boosting confidence in nitrogen application to maximise yields.
- Exceptional **resilience to adverse conditions**, Blackstone copes well with drier spring and early summer periods, minimal stress tipping observed in other varieties.
- The **higher straw volume** of Blackstone presents dual opportunities for growers, allowing for increased income through removed baled straw while also enhancing soil health.

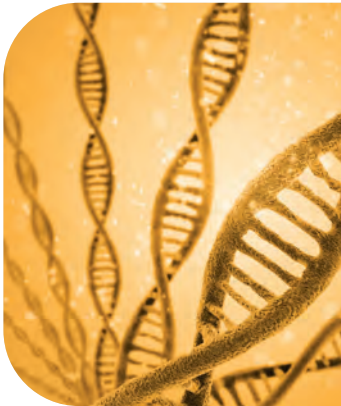
## QUALITY

Spec Weight (kg/hl)	Protein	HFN	Chopin P/L	Alcohol Yield*
78.2	10.9%	299	0.5	101%

- High specific weight and protein percentage ensures **superior grain quality**.
- Blackstone achieves **high alcohol yields**, as evidenced by trials spanning two years, with yields approximating 101% of controls, indicating excellent viscosity and fermentability.

# VARIETIES THAT EXCEED EXPECTATIONS

We're committed to continued investment in cutting-edge research and development to bring you top-tier winter wheat varieties, like Blackstone.



## Advanced genomics platform.

Our state-of-the-art genomics platform enables us to accelerate the breeding process, allowing for precise selection of desirable traits. This technology empowers us to develop varieties that deliver superior performance.



## Expert staff and technology.

Our dedicated team of breeders, scientists, and agronomists work tirelessly to develop and refine our varieties. We harness the power of artificial intelligence (AI) and drone technology to enhance our breeding programs and ensure the highest quality standards.



## Strength in partnership.

Elsoms' long-term partnerships ensure we rigorously evaluate and validate our wheats' performance through extensive testing in various scenarios and conditions. Elsoms has access to a huge resource of data and knowledge. Our partnerships also give us access to a wide variety of breeding material from across the world allowing us to keep developing new varieties year on year, bringing beneficial new traits to market.

## Speak to the specialists

For any questions about Blackstone Winter Wheat or to discuss the portfolio, contact the team today:

### GEORGE GOODWIN

Head of Technical (Agriculture)

m 07866 793689

e [george.goodwin@elsoms.com](mailto:george.goodwin@elsoms.com)



### TOBY REICH

Head of Agricultural Sales

m 07376 030918

e [toby.reich@elsoms.com](mailto:toby.reich@elsoms.com)



### LEWIS DEAN

Seed Sales Specialist

m 07779 776423

e [lewis.dean@elsoms.com](mailto:lewis.dean@elsoms.com)




Elsoms Seeds Ltd., Pinchbeck Road,  
Spalding, Lincolnshire PE11 1QG

t 01775 715000

e [seed@elsoms.com](mailto:seed@elsoms.com)

[elsoms.com](http://elsoms.com)

 Follow us - search 'Elsoms Seeds'

  
The Seed Specialists